

Trees Get New Life



Under the direction of Parks, Forestry, and Cemetery Manager Paul Burkholder and City Forester Dave High, Golden transplanted 38 trees slated for destruction in the Earl Johnson Road improvement project. These trees now provide shade and a wind block at Splash at Fossil Trace Aquatics Park and Tony Grampsas Sports Complex. The trees' energy benefits are one of many environmental improvements provided by Golden's strategic urban forestry activity.

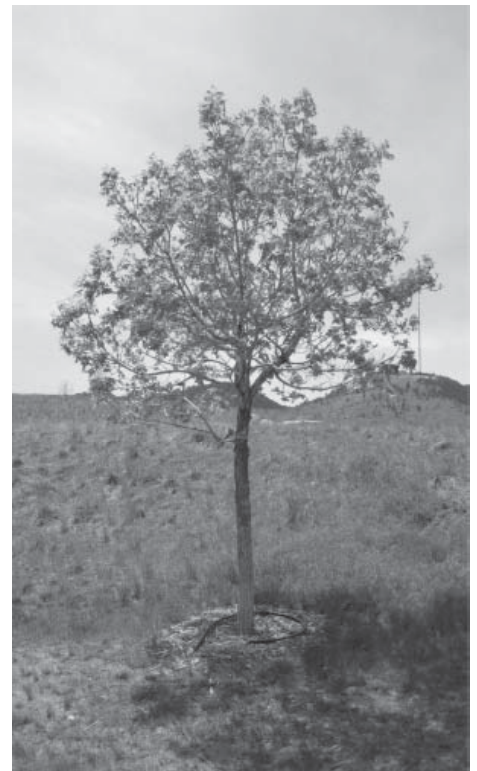
This project was made possible with the help of a Strategic Tree Planting Plan for Environmental Improvement prepared by the nonprofit Institute for Environmental Solutions (IES). IES helped the Forestry Division position the trees to conserve building energy by shading the building and blocking wind.

"Trees can provide the community with many benefits," said Golden's City Forester Dave High. "The Strategic Plan quantifies those benefits and helps us to see the

impact of planting decisions."

The Strategic Tree Planting Plan was one result of The Tree Project: Integrated Urban Environmental Improvement Through Tree Selection and Management, a study conducted by IES in Golden from 2005 to 2008. IES, City of Golden Parks and Recreation Department staff members and volunteers researched the environmental impacts of Golden's trees in order to improve tree selection, location and maintenance. IES researchers measured the urban forest's effects on air quality, energy conservation, carbon sequestration, water use and stormwater runoff. The study showed that trees can have both positive and negative impacts on the environment and that planting the right tree in the right place can make a big difference.

The Golden Strategic Tree Planting Plan and other information on the environmental impact of Golden's urban forest are available at the IES Web site, www.i4es.org.



Transplanted trees removed during the Johnson Road Improvement Project provide aesthetic and environmental benefits to the Splash Aquatics Park and Tony Grampsas Sports Complex.